

UMASIPALA WENGINQI I-FRANCES BAARD



ICANDELO LE- 14 LENCWADANA ENIKA ULWAZI UMTHETHO 2 WONYAKA WAMA- 2000, UKUXHASA UFIKELELO KULWAZI

Le ncwadana iyafumaneka gesiBhulu, isiTswana nesiLungu

1.	INTSHAYELELO	3
2.	ISIKHOKHELO SEKOMISHONI YAMALUNGELO OLUNTU KULO MTHETHO	3
3.	IMISEBENZI NESAKHIWO SE-FBDM	3
3.1	Amagqabantshintshi nge-FBDM.....	3
3.2	Imisebenzi yombutho woluntu	4
3.3	Isakhiwo soLungiselelo	5
4.	IINKCUKACHA ZONXIBELELWANO	6
4.1	Amagosa olwazi	6
5.	IZIFUNDO KUNYE NEENDIDI ZEENGXELO EZIGCINWE YI-FBDM	7
6.	IINGXELO EZIKHOYO EZIFUMANEKA NGOKUKHAWULEZA EZIGCINWE YI-FBDM {Icandelo 14(1) (e)}	7
6.1)	Izibhengezo ezikhawulezayo	8
7.	INKQUBO YOKUCELA ULWAZI	8
7.1)	Uhlobo lwesicelo	8
7.2)	Inkqubo	8
8.	IINKONZO EZIFUMANEKAYO [ICANDELO 14(1)(F)].....	9
8.1)	Uhlobo lweenkonzo	9
9.	INDLELA YOKUFIKELELA KWEZI NKONZO	10
9.1)	Inkqubo yokwenza isicelo.....	10
9.2)	Imali ehlawulwayo	12
10.	IINDLELA ZOKULUNGISA APHO IZICELO ZOFIKELELO KULWAZI ZINGAMKELWAYO	13
10.1)	Ukungamkelwa kwesicelo	13
10.2)	Isibheni	14
11.	AMALUNGISELELO AVUMELA UKUTHATHA INXAXHEBA KOLUNTU KUQULUNQO LOMGAQO-NKQUBO NOKUSETYENZISWA KWAMANDLA [ICANDELO 14 (1)(G)].....	14
12.	UKUHLAZIYWA KWENCWADANA ENIKA ULWAZI [ICANDELO 14 (2)] ..	15
13.	UKUFUMANEKA KWENCWADANA ENIKA ULWAZI [ICANDELO 14 (3)] ..	15

1. INTSHAYELELO

UmThetho wokuXhasa uFikelelo kuLwazi, oNombolo ingu-2 wonyaka wama-2000 (apha ekubhekiselwe kuwo njenge-“PAIA”, okanye ‘umThetho’ otshintshatshintshayo) ngumthetho kazwelonke oye wasetyenziswa ukuze unike ifuthe kwilungelo lomgaqo-siseko lofikelelo kulwazi. I-PAIA yaqalisa ukusebenza ngomhla wesi-9 kuMatshi 2001, ngaphandle kwamacandelo 10, 14, 15 nelama-51, aye wona aqalisa ukusebenza ngomhla we-15 kuFebhruwari 2002.

Icandelo le-14 lalo mThetho libophelela imibutho emele uluntu ukuba iqulunqe iNcwadana enika ulwazi, eza kunceda umntu ukuba afikelele kulwazi olugcinwe ngumbutho omele uluntu, kwaye umisela ubuncinane beemfuneko ekufuneka ukuba le ncwadana enika ulwazi izithobele.

Injongo yale ncwadana kukwazisa umntu ngendlela yokufikelela kwingxelo egcinwe nguMasipala weNgingqi i-Frances Baard (i-FBDM), ibe ke ngoko yenza ukuba iCandelo 14 lalo mThetho lisebenze.

2. ISIKHOKHELO SEKOMISHONI YAMALUNGELO OLUNTU KULO MTHETHO

Icandelo le-10 le-PAIA lithi iKomishoni yamaLungelo oLuntu yaseMzantsi Afrika kufuneka iqulunqe izikhokhelo ezilula neziqondeka kakuhle zokuba usetyenziswe njani na umThetho wokuXhasa uFikelelo kuLwazi.

Inguqulelo efumaneka kwikhompyutha yesi Sikhokhelo iza kugcinwa kwiwebhusayithi yeKomishoni yamaLungelo oLuntu ethi, www.sahrc.org.za, kwaye iza kuhlaziywa qho ngenyanga ukuze kube nokwaziswa ngezinto ezintsha ezivelayo nangotshintsho olumalunga neenkukacha zonxibelelwano zamagosa olwazi emibutho emele uluntu kunye nolwazi oluphangaleleyo olumalunga ne-PAIA.

likopi zesiKhokhelo zikwafumaneka ngazo zonke iilwimi ezisemthethweni kwezi ofisi zilandelayo:

1. I-ofisi yamagosa olwazi emibutho emele ukuntu;
2. Kuzo zonke ii-ofisi ezimele imibutho yoluntu;
3. Kuzo zonke ii-ofisi zeeNkundla zooMantyi;
4. Zonke ii-ofisi zeSebe lezoBulungisa noPhuhliso loMgaqo-siseko;
5. Kuzo zonke iiposi;
6. KuMqulu kaRhulumente

3. IMISEBENZI NESAKHIWO SE-FBDM

3.1 Amagqabantshintshi nge-FBDM

“UMasipala weNgingqi i-Frances Baard uzibophelele ekunikeneni nasekuphuculeni umgangatho weenkono, aze ke ngoko aphucule ubomi boluntu lonke olukuye ngokwenza oku kulandelayo:

- Ngokuxhasa uPhuhliso loLuntu noloQoqosho
- Ngokunikeza nokugcina iinkono ezifikelelekayo nezisemgangathweni ophezulu
- Usetyenziso olubonisa uqoqosho nolululo lwazo zonke izibonelelo ezikhoyo, kunye;
- NabaThathi-nxaxheba abangabo kunye noThatho-nxaxheba olubonisa noluxhasa ulawulo-melo loLuntu”

Imisebenzi nesakhiwo sikaMasipala weNgingqi i-Frances Baard (i-FBDM) sesi: [ICandelo le-14 (1)(a)]

3.2 Imisebenzi yombutho omele uluntu

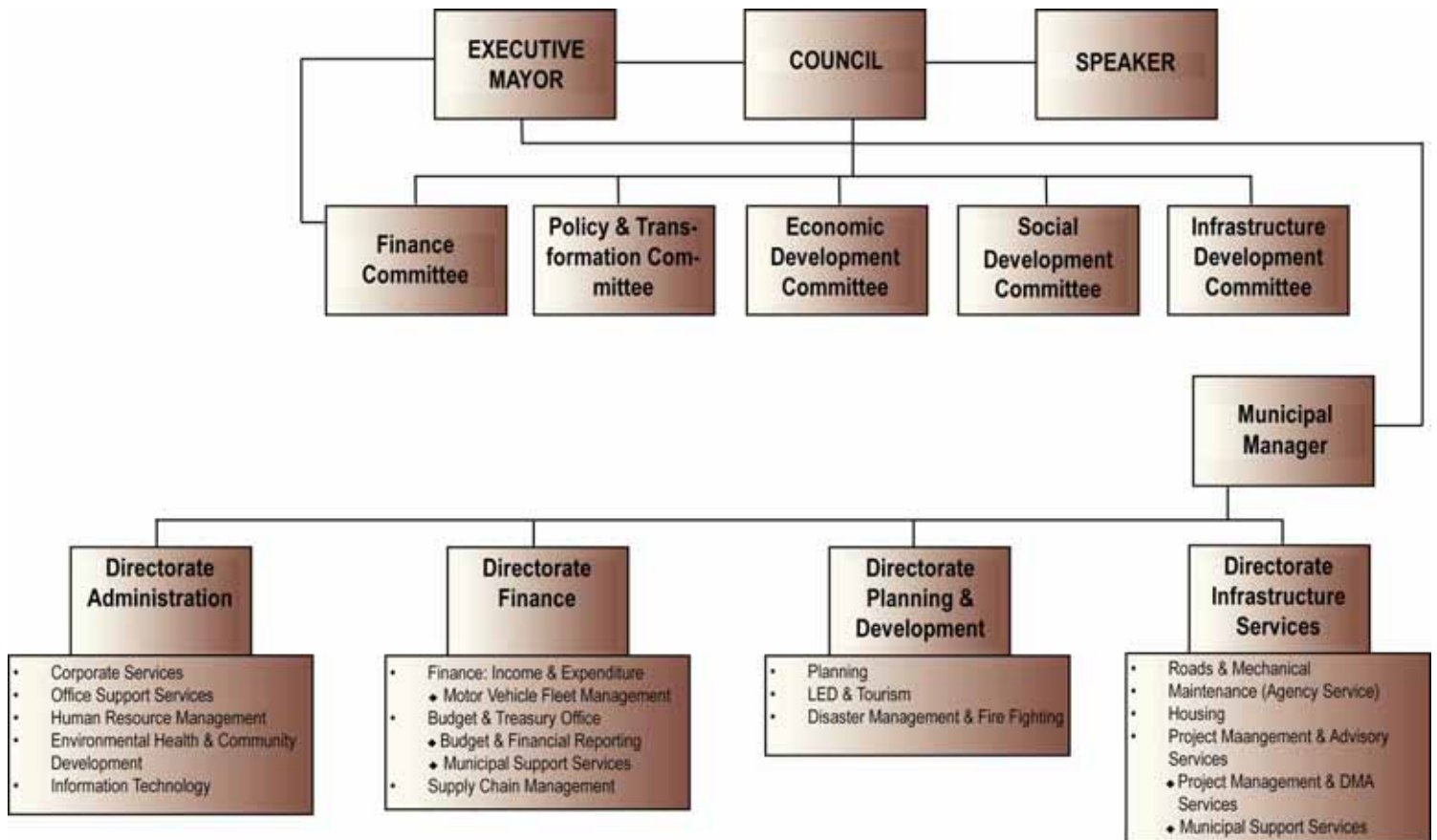
Imisebenzi enikwe uMasipala weNgingqi i-Frances Baard ngokomThetho 156 nowama-229 woMgaqo-siseko waseMzantsi Afrika (umThetho 108 wonyaka we-1996) nomiselwe kwiCandelo 5 lomThetho wezaKhiwo zikaMasipala wonyaka we-1998 yile ilandelayo:

"Umasipala wengingqi kufuneka ukuba azame ukuphumeza uphuhliso oluxubeneyo loluntu noloqoqosho, olungapheliyo nolulinganayo lwesiza salo siphelele ngokwenza oku kulandelayo -

- (a) Ukuqinisekisa ucwangciso oluxubeneyo lophuhliso lwengingqi iphelele;
- (b) Ukuxhasa uphuhliso olumandla lwezakhiwo zezibonelelo kunye neenkonzongcingqi iphela;
- (c) Ukwakha izakhono zoomasipala beendawo kwengingqi yawo ukuze benze imisebenzi yabo besebenzise namandla abo apho izakhono zingekhoyo; kunye
- (d) Nokuxhasa usasazo olulinganayo lwezibonelelo phakathi koomasipala beendawo kwizizabazobu ukuqinisekisa imigangatho eyiyo yeenkonzo zikamasipala ngaphakathi kwesiza ." Ukongeza, umasipala wengingqi unemisebenzi namandla anxulumene noku kulandelayo:
 - (i) Iziza zokuchitha inkunkuma ezinika iinkonzongcingqi uphelele
 - (ii) lindlela zikamasipala eziyinxalenye ebalulekileyo yenkqubo yezothutho kwindawo kamasipala uphela
 - (iii) Ulawulo lweenkonzo zabahambi
 - (iv) Izikhululo zeenqwelo-moya ezinika inkonzongcingqi kwindawo ekwengingqi kamasipala uphela
 - (v) Iinkonzongcingqi zolawulo lwemililo ezinika inkonzongcingqi kwindawo yengingqi kamasipala uphela
 - (vi) Ukwakhiwa, ukwenziwa nokulawula iimveliso zezilimo ezintsha kunye neendawo zokuxhela ezinika inkonzongcingqi kwindawo yesahlulo esibalulekileyo soomasipala basengingqini
 - (vii) Ukwakhiwa, ukwenziwa kunye nolawulo lweendawo zokungcwaba nezokutshisa izidumbu ezinika iinkonzongcingqi kwiindawo ezikwizahlulo ezibalulekileyo zoomasipala beengingqi
 - (viii) Ukuxhasa ezokhenketho zendawo kwisiza esisengingqini kamasipala
 - (ix) Imisebenzi yoluntu kamasipala ehambelana kunye nawo nawuphina umsebenzi kule ingentla okanye nayiphi na eminye imisebenzi enikwe umasipala wengingqi

3.3 ISakhiwo soLungiselelo

NB: The translation of this section is at the end of the document.. I could'nt overwrite.



I-FBDM iquka isakhiwo sezopolitiko kunye nesolawulo.

a) ISakhiwo zezoPolitiko

USomlomo (Nkszn Maria Chwarisang), iMeya yeDolophu (Mnu Achmat Florence) kunye nabanye ooCeba abangama-23 abakwezi nkonzo zilandelayo:

- IKomiti yubuMeya
- UPuhliso loMgaqo-nkqubo nobeZiko
- UPuhliso lwezaKhiwo zeziBonelelo
- UPuhliso lwezeNtlalo
- UPuhliso lwezoOoqosho
- Ezemicimbi yeMali

likomiti

UmThetho wezaKhiwo zikaMasipala umisela ulwakhiwo lweKomiti yobuMeya kunye neeKomiti ezingaphantsi kwayo. Amalungu eKomiti yobuMeya kunye nabahlali-ngaphambili beekomiti ezingaphantsi kweyobumeya ezahlukeneyo.

Ulwakhiwo lweKomiti yobuMeya

Mnu. A Florence	(Imeya yeDolophu: nguMhlali-ngaphambili)
Nkszn D.M Moeketsi	(uPhuhliso loMgaqo-nkqubo namaZiko)
Mnu. P.N Jammer	(uPhuhliso lweZakhiwo zeziBonelelo)
Nkszn M.M Moloi	(uPhuhliso lwezeNtlalo)
Mnu. B Maribe	(uPhuhliso lwezoQoqosho)
Mnu W Johnson	(ezemiCimbi yeMali)

b) ISakhiwo sezoLawulo

- I-Ofisi yoManejala kaMasipala
- UMLawuli kwezoLawulo
- UMLawuli kwezeZimali
- UMLawuli kwezoCwangciso noPhuhliso
- UMLawuli weeNkonzo zeZakhiwo zeziBonelelo

4. IINKCUKACHA ZONXIBELELWANO

Idilesi yeNdawo : 51 Drakensberg Avenue
Carters Glen
KIMBERLEY, 8301

Idilesi yePosi: Private Bag x6088
KIMBERLEY, 8300

Ifowuni : +27 (0) 53 838 0911
IFeksi: +27 (0) 53 861 1538
I-imeyile: thabo.nosi@fbdm.co.za
IWebhusayithi: www.francesbaard.gov.za

4.1 Amagosa olwazi

Iinkcukacha zonxibelelwano zeGosa loLwazi nezeGosa loLwazi elinguMncedisi eziyilwe ngokweCandelo 17 lomThetho zimi ngolu hlobo:

IGosa loLwazi : Mnu. Thabo Nosi
uManejala kaMasipala

Inombolo yefowuni: +27 (0) 53 838 0998
Ifeksi: +27 (0) 53 861 1538

Igosa loLwazi elinguMncedisi: Nkszn Nomama Kgantsi
Umlawuli: KwezoLawulo
Inombolo yefowuni: +27 (0) 53 838 0960
Ifeksi: +27 (0) 53 861 1538

5. IZIFUNDO NEENDIDI ZEENGXELO EZIGCINWE YI-FBDM

a) lifayile zonxibelelwano

- EzemiThetho
- EzoLwakhiwo, ukubhangiswa nokuhlelwa ngokweendidi kooCeba
- Ezemiqulu yabavoti, uLonyulo, nooCeba
- EzeBhunga neeKomiti zeBhunga: ukumiswa kwazo neentlanganiso
- EzoLungiselelo noLawulo
- EzemiCimbi yeMali
- Ezesitokwe sikamasipala wengingqi, iinkonzo, iziza nezakhiwo
- EzeZiniki-maxabiso, izivumelwano neemvumelwano
- Izibonelelo zoLuntu
- EzeeNgxelo, iingeniso neenkukacha-manani
- EzeZaziso, ulwazi, imifuziselo nemikhankaso
- EzeMisitho neentlangano zoluntu
- EzokuMiswa neentlanganiso zemibutho nezinye izehlo
- EzoLawulo lwezoBulungisa
- EzoBhaliso, amaphepha-mvume, iziqinisekiso neemvume
- EzoCwangciso, ulawulo lolwahlulo kwakhona lomhlaba nezakhiwo
- EzeeNkonzo eziFunekayo
- EzeeNkonzo zoLuntu

b) Izinto ezimalunga nemali

c) Izibonelelo zoluntu

d) li-ajenda nemizuzu

e) liRejista

f) Amafoto

g) Izinto / limathiriyeli ezi-Catographic

h) lifilim, iividiyo kunye nesandi sokurekhoda

i) Ukurekhoda kusetyenziswa izinto zombane

j) Iingxelo eziphelisiweyo

6. IINGXELO EZIFUMANEKA NGOKUKHAWULEZA EZIKHOYO EZIGCINWE YI-FBDM {Icandelo 14 (1) (e)}

Iingxelo ezidweliswe ngezantsi zifumaneka ngokukhawuleza umntu engakhange abe ucela ukufikelela ngokomThetho. Apho kukho iikopi ezaneleyo, ingxelo leyo inokufunyanwa ngaphandle kwentlawulo xa ngaba zisekhona. Emva kokuba ziphinde zenziwa kukho intlawulo eyenziwayo.

Ezinye zezi ngxelo zikwafumaneka ngaphandle kwentlawulo kwiwebhusayithi ye-FBDM ethi:
www.francesbaard.gov.za.

(1) Izibhengezo ezifumaneka ngokukhawuleza

- lingxelo
- lincwadana zolwazi
- liphamflethi
- lipowusta
- Oolindexsha

7. IZICELO ZENKQUBO YOKUCELA ULWAZI

Umenzi-sicelo kufuneka afikeleliswe kwingxelo yombutho woluntu xa ngaba umenzi-sicelo lowo ethobela ezi zinto zilandelayo:

- Umenzi-sicelo uthobela zonke iimfuneko zenkqubo zomThetho onxulumene nesicelo okanye nofikelelo kuloo ngxelo; kwaye
- Ufikelelo kuloo ngxelo alwaliwa nangayiphina indlela yokwaliwa ekhankanywe kwisaHluko 4 somThetho.

7.1) Uhlobo lwesicelo

- Umenzi-sicelo kufuneka azalise ifomu enokufunyanwa kuMqulu kaRhulumente (Government Gazette) Isaziso sikaRhulumente R187 – 15 Febhruwari 2002, iFomu A] ekwafumaneka nakwiwebhusayithi kaMasipala weNgigqi (www.francesbaard.gov.za)

7.2) Inkqubo

- Umenzi-sicelo kukwafuneka ukuba axele ukuba ufuna ukwenza ikopi yengxelo na okanye ufuna ukuhlola ingxelo ekwii-ofisi zombutho omele uluntu na. Okanye ukuba ingxelo leyo ayiloxwebhu ingajongwa ngohlobo olo luceliweyo, ukuba kuyenzeka [s 29(2)]
- Ukuba umntu ucela ukufikelela kwifomu ethile, umenzi-sicelo lowo kufuneka afikelele kuyo ngendlela ekuthiwe makwenziwe ngayo. Oku kwenziwa xa ngaba ukwenza oko kuza kuphazamisana ngendlela engeyiyo nokuqhuba kombutho lowo omele uluntu, okanye kuza konakalisa ingxelo, okanye kuza kwaphula umthetho welungelo lombhali lokushicilela nokuthengisa umsebenzi wakhe elingelilo elikarhulumente. Ukuba ngaba ngenxa yezizathu zokwenziwayo ufikelelo alunako ukunikwa kwifomu efunekayo kodwa ngenye indlela, ngoko ke makubalwe intlawulo ngokwendlela umenzi-sicelo aye wayicela ngayo [s 29(3) kunye (4)]
- Xa kusongezwa kwimpendulo ebhaliweyo emalunga nesicelo sakhe sengxelo, umenzi-sicelo ufuna ukuxelelwa ngesigqibo ngayo nayiphi na indlela, umzekelo, ngefowuni, oku kufuneka ukuba kubonakaliswe okanye kuxelwe [s 18(2) (e)]
- Ukuba ngaba umenzi-sicelo ucela ulwazi egameni lomnye umntu, indlela ekwenziwa ngayo isicelo eso kufuneka ixelwe [s 18(2) (f)]
- Ukuba ngaba umenzi-sicelo akakwazi ukufunda okanye ukubhala, okanye ukhubazekile, unokwenza isicelo sengxelo ngomlomo. Igosa lolwazi kufuneka ukuba lizalise ifomu egameni lomenzi-sicelo lowo lize limnike ikopi yefomu leyo [s 18(3)]

Kukho indidi ezimbini zentlawulo ekufuneka zihlawulwe ngokomThetho, ezo iyintlawulo yokwenza isicelo kunye nentlawulo yokufikelela s22:

Umenzi-sicelo ofuna ufikelelo kwingxelo equlathe ulwazi olumalunga neenkukacha zakhe akufunekanga ukuba ahlawule intlawulo yokwenza isicelo. Nawuphi na omnye umenzi-sicelo, ongenguye umenzi-sicelo ofuna iinkukacha zakhe, kufuneka ukuba ahlawule intlawulo efunekayo:

- Igosa lolwazi kufuneka lazise umenzi-sicelo (ongenguye umenzi-sicelo ofuna iinkukacha zakhe) ngesaziso ukuba ahlawule intlawulo emiselweyo (ukuba ikho) phambi kokuba kuqhutyelwe phambili ngesicelo eso.
- Intlawulo yokwenza isicelo kwimibutho emele uluntu ngama-R35. Umenzi-sicelo usenako ukufaka isibheni sangaphakathi, apho kuyimfuneko, okanye enze isicelo enkundleni yamatyala esichasene nesiniki-maxabiso okanye intlawulo yesicelo
- Emva kokuba igosa lolwazi lenze isigqibo malunga nesicelo, kufuneka ukuba umenzi-sicelo axelelwe ngeso sigqibo ngendlela yokwaziswa ebifunwe ngumenzi-sicelo
- Ukuba ngaba isicelo sivunyiwe, kufuneka ukuba kuhlawulwe enye intlawulo yokufikelela yokukhangela, yamalungiselelo, yokuveza kwakhona neyalo naliphina ixesha eligqitha iiyure ezimiselweyo zokukhangela nokulungiselela ingxelo ukuba ibhengezwe.

8. IINKONZO EZIFUMANEKAYO [ICANDELO 14(1) (F)]

8.1) Uhlobo lweenkonzo

Kwimeko ye-FBDM, ezi ziza kuquka iinkonzo ngokwendlela echaza isakhiwo se-FBDM:

Ibhunga neeKomiti

Ikomitana zidibana qho ngenyanga zize ziqulunqe iingcebiso eziya kwiKomiti yobuMeya, nayo edibana qho ngenyanga ize ingenise iingcebiso ezo kwiBhunga. Le nkqubo ixhasa ingxoxo eyondeleleyo yayo yonke imiba.

I-Ofisi kaManejala kaMasipala

IManejala kaMasipala inoxanduva lokwenza uphuhliso lolawulo lwezoqoqosho, olulungileyo, olululo nolubonisa uxanduva ngokomThetho weeNkqubo zikaMasipala onguNombolo 32, 2000 kunye neminye imithetho esebenza kuMasipala. I-ofisi kaManejala kaMasipala iquka iiNkonzo zoPhicotho-mali lwaNgaphakathi, zoNxibelelwano nezeeKomiti.

ULawulo loBongameli

Eli sebe linikeza inkonzo ebanzi kuMasipala ngokwemisebenzi ekhankanywe apha ngezantsi:

- IiNkonzo eziManyeneyo
- IiNkonzo zokuXhasa i-Ofisi
- IiNkonzo zeziBonelelo zoLuntu
- EzeMpilo yeMimandla eNgqongileyo
- UPhuhliso loLuntu
- UbuGcisa boLwazi

UBongameli kwezemiCimbi yeMali noLawulo (ezemiCimbi yeMali)

Eli sebe linikeza iinkonzo zemimbi yemali eziquka le misebenzi ilandelayo:

- Ingeniso neNkcitho
 - ULawulo loLudwe lweeMoto
- I-Ofisi yoHlahlo-lwabiwo-mali neyeSebe lezeMali
 - Ukwenza ingxelo yoHlahlo-lwabiwo-mali neyemicimbi yemali
 - Iinkonzo zokuxhasa uMasipala
- ULawulo lweKhonkco loNikezelo

UBongameli kuCwangciso noPhuhliso

- Ucwangciso
- Ucwangciso lweDolophu
- I-GIS
- ULawulo loKwenza
- I-LED nezokhenketho
- ULawulo lweNtlekele nokuLwa imiLilo
- ULawulo loSetyenziso loMhlaba

UBongameli beeNkonzo zeZakhiwo zeziBonelelo

- IiNdlela nooMatshini
- UGcino (Iinkonzo zobu-Arhente)
- Ezezindlu
- Iinkonzo zoLawulo lweeProjekhthi nezeeNgcebiso
- Iinkonzo zoLawulo lweeProjekhthi ne-DMA
- Iinkonzo zokuXhasa uMasipala

9. IINDLELA YOKUFIKELELA KWEZI NKONZO

9.1) Inkqubo yokwenza isicelo

Inyathelo 1: Isicelo

Xa umntu enqwenela ukufikelela kulwazi olugcinwe yi-FBDM, umntu lowo kufuneka enze isicelo sokufikelela kolo lwazi kwifomu emiselweyo. Le fomu ifumaneka kwiwebhusayithi ye-FBDM apha: www.francesbaard.gov.za, okanye inokufumaneka ngokwenza isicelo sayo kuManejala kaMasipala kule Nombolo yeFowuni: 053 – 838 0996.

Ifomu yokwenza isicelo egqityiweyo inokungeniswa ku:

Manejala kaMasipala
Mnu. Thabo Nosi

Idilesi yesitalato: 51 Drakensberg
Carters Glen
KIMBERLEY
8301

Idilesi yeposi: Private Bag X6088
KIMBERLEY
8300

Ifowuni: +27 (0) 53 838 0911
Ifeksi: +27 (0) 53 861 1538
I-imeyile : thabo.nosi@fbdm.co.za

Inyathelo 2: Ukuqinisekisa nemvume

Igosa lolwazi lamkela lize liqinisekise isicelo ukuze libone ukuba ingaba ulwazi olufunekayo lukhona na ngaphakathi kwe-FBDM. Isicelo siyamkelwa, asamkelwa okanye sigqithiselwa kubagcini abanelungelo lokugcina ulwazi olo lufunekayo. Kuye kugqithiswe imvume kumenzi-sicelo ukuqinisekisa iwonga lesicelo eso.

Inyathelo 3: Ukuqhutywa kokufunwa kolwazi

Ukuba isicelo samkelwe, i-FBDM iza kuqokelela ize ilungiselele ulwazi olo, ize ibale ixabiso elililo elifunekayo. Ixabiso libalwa ngokomhlathi 9.2.

Inyathelo 4: Isaziso sokugqibela

Umenzi-sicelo uza kwaziswa ngokugqitywa kwesicelo nangentlawulo ekufuneka ihlawulwe kwi-FBDM.

Inyathelo 5: Intlawulo nokuhanjiswa

Xa intlawulo ifunyenwe njengoko kumiselwe kwiNyathelo 4 (kulandelwa inkqubo yokuhlawula efanayo njengoko imiselwe kwiNyathelo 1), ulwazi luyakhutshwa lunikwe umenzi-sicelo.

Ulwazi ngokubanzi

Ifomu emiselweyo kufuneka izaliswe ngeenkukacha ezaneleyo ukuze iGosa loLwazi likwazi ukuchonga oku kulandelayo:

- Ingxelo okanye iingxelo ezicelwayo;
- Ukuba ngubani koMenzi-sicelo;
- Yeyiphi ifomu yofikelelo efunwayo, xa ngaba isicelo samkelwe;
- Idilesi yeposi okanye inombolo yefeksi yomenzi-sicelo.

I-FBDM iza kuqhuba ngesicelo eso ngaphakathi kweentsuku ezingama-30, ngaphandle kokuba umenzi-sicelo uye waxela izingathu ezizodwa zeemeko ezixela ukuba eli xesha lingentla kufuneka lingathotyelwa ngezizathu ekufuneka ukuba zanelise iGosa loLwazi. Ixesha leentsuku ezingama-30 ekufuneka ukuba i-FBDM yenze isigqibo sokwamkela okanye sokwala isicelo sisenokwandiswa siye kwelinye ixesha elingekho ngaphezu kweentsuku ezingamashumi amathathu ukuba ngaba isicelo eso sesesixa esikhulu solwazi, okanye isicelo eso sifuna ukuba kukhangelwe ulwazi kwenye i-ofisi yeli ziko kwaye olu lwazi alunakufumaneka ngokukuko ngaphakathi kweentsuku ezingama-30. I-FBDM iza kwazisa umenzi-sicelo ngokubhala xa kunokufunwa ukwandiswa kwexesha.

Ukuba isicelo senziwa egameni lomnye umntu, umenzi-sicelo kufuneka angenise ubungqina bemo leyo umenzi-sicelo acela ngayo ulwazi, ekwenza oko ngendlela eyanelisa ngokukuko iGosa loLwazi. Ukuba ngaba umntu lowo akakwazi ukuzalisa ifomu emiselweyo kuba engafundanga okanye ekhubazekile, umntu lowo angasenza ngomlomo isicelo. Umenzi-sicelo kufuneka ahlawule intlawulo emiselweyo phambi kokuba kuqhutywe nesicelo eso.

9.2) Intlawulo

UmThetho unika iindidi ezimbini zentlawulo:

- a) Intlawulo yokwenza isicelo, ezakuba yintlawulo ebekiweyo; kunye
- b) nentlawulo yokufikelela kulwazi, ekufuneka ukuba ibalwe ngokuqwalasela iindleko zokuphinda kuveliswe, zexesha lokukhangela nelokulungiselela, kwakunye neendleko zeposi.

Xa isicelo sifunyenwe liGosa loLwazi, iGosa elo liza kufuna ukuba umenzi-sicelo, ongenguye umenzi-sicelo oneenkukacha zomntu lowo, ahlawule intlawulo emiselweyo yokwenza isicelo (ukuba ikho), phambi kokuba kuqhutywe ngesicelo eso, oku kusenziwa ngesaziso. Ukuba ukukhangelwa kwengxelo nokulungiselelwa kokubhengezwa kwesicelo, kuqakwa amalungiselelo okusenza sifumaneke kwifomu efunwayo, kufuna ixesha elingaphezu kweeyure ezimiselweyo kwimithetho emalunga nale njongo, iGosa loLwazi liza kwazisa umenzi-sicelo ukuba ahlawule njengedipozithi inxenye yentlawulo yofikelelo kwisicelo, eza kuhlawulwa xa isicelo samkelwe.

I-Gosa loLwazi liza kuyibamba ingxelo ade abe umenzi-sicelo uyihlawule intlawulo efunekayo njengoko ibonisiwe ngezantsi. Umenzi-sicelo osicelo sakhe sofikelelo kwingxelo esiye samkelwa, kufuneka ukuba ahlawule intlawulo yofikelelo yokuba kuphinde kwaveliswe ingxelo leyo, yokukhangela, yokulungiselela, kwakunye neyalo naliphina na ixesha elifunekayo elidlula kwiinyure